



**BiOLUX**  
Restore Health Naturally



**Anti  
Inflammation**



**Powerful  
Antioxidant**



Features an easy to  
use Smart Chip System  
Iconic Press Buttons

- To Start
- To Heat
- For HYDROGEN Gas
- For HYDROGEN Water



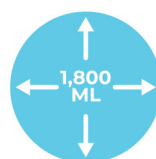
## **PORTABLE HYDROGEN POT** **Designed For Your Whole Family**



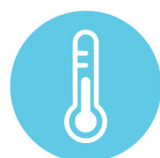
**HYDROGEN  
Water**  
UP TO  
1.2ppm  
for drinking



**HYDROGEN Gas**  
for inhaling  
99.999% Purity



**Compact design**  
with 1,800ml  
capacity



**Smart heating**  
controls -  
Up to 80°C



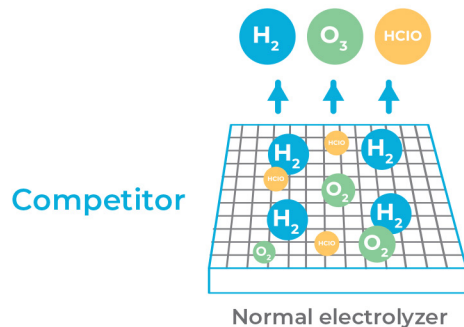
**Portable and**  
no installation  
required



**Highly concentrated**  
dissolved HYDROGEN  
up to 1,200ppb

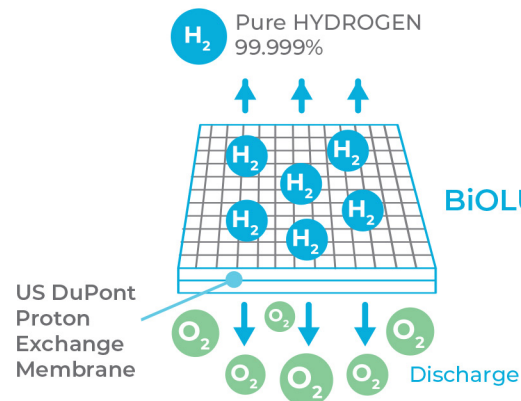
# PORTABLE HYDROGEN POT

- The World's First Portable HYDROGEN Pot
- With Patented Indirect Electrolytic Technology



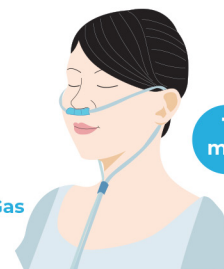
Most of the product in the market lack of practical experience, can't effectively separate the by-products after electrolysis. It will have mixture of HYDROGEN gas, OZONE gas, Hypochlorous acid in the water.

VS



## Benefit of Inhaling HYDROGEN Gas

Portable HYDROGEN Pot generates pure HYDROGEN Gas with purity up to 99.999%. Inhaling 1 min pure HYDROGEN Gas is approximately equivalent to drinking 1 litre HYDROGEN Water.



1 min ≈



*\* Antioxidant and anti-inflammation by inhaling at least 1 hour a day.*

*\* Individual results may vary and are not intended to represent or guarantee that anyone will achieve the same or similar results.*

## SPECIFICATIONS:

Model		EOS7150-HG
Capacity		1.8 L
Power Supply		AC 110V~220V, 220~240V, 50/60Hz
Power Consumption		240W
HYDROGEN Gas	Purity	≥ 99.999%
	Yield	12ml/min ± 10%
HYDROGEN Water	Concentration	up to 1,200 ppb*
	ORP Value	≧ -550 mV*
	pH	Maintain pH value**
Temperature		Smart Heating Control: room temperature, 50°C, 65°C, 80°C
Dimensions (W x D x H)		185 x 290 x 330 (mm)
Net Weight		3 kg
Warranty		1-year limited warranty
Safety		No harmful by-products (Hypochlorous Acid & OZONE)

\* Concentration of HYDROGEN in water and ORP may vary according to water quality and temperature.

\*\* pH value is depending on the quality and type of water source that pouring into the drinking water tank.

